



Republic of the Philippines
BULACAN STATE UNIVERSITY
City of Malolos, Bulacan
(044) 896-1790

BIDS AND AWARDS COMMITTEE INFRASTRUCTURE & REPAIRS

January 27, 2022

Bid Bulletin No. 4 MODIFICATIONS IN THE INVITATION TO BID AND PLANS AND REPLY TO QUERIES/CLARIFICATIONS BY BIDDER

This Supplemental/ Bid Bulletin no. 4 dated January 27, 2022 for the project: **“CONSTRUCTION OF FIVE-STOREY RESOURCE MANAGEMENT BUILDING- PHASE 2 (INFRA-2022-01)”**, is issued to modify or amend items in the Bid Document, and to address queries/ clarifications sent by bidders through e-mail in compliance with Section 25.5.1 of the 2016 Revised IRR of RA 9184.

I. INVITATION TO BID/BID BULLETIN NO. 2

Activity	FROM	TO
Deadline of submission of bids	February 2, 2022 (Wednesday) 3:00 p.m.	<u>February 17, 2022</u> <u>(Thursday) 1:30 p.m.</u> <u>Venue: G/F Roxas Hall,</u> <u>BulSU Main Campus,</u> <u>Malolos City, Bulacan</u>
Opening of Bids	February 2, 2022 (Wednesday) 3:00 p.m.	<u>February 17, 2022</u> <u>(Thursday) 1:30 p.m.</u> <u>Venue: G/F Roxas Hall,</u> <u>BulSU Main Campus,</u> <u>Malolos City, Bulacan</u>

II. REPLY TO QUERIES/CLARIFICATIONS SENT BY BIDDER THROUGH E-MAIL

No.	QUERIES/CLARIFICATIONS	ANSWER
1	The following are not found in the Bill of Quantities. Kindly clarify if these are excluded in the scope of works: a. Skylight Dome tempered clear glass and aluminum framing	<u>Skylight Dome tempered glass and aluminum framing are not included in this phase</u>

	b. Plumbing Fixture (Water Closet, Urinal, Lavatory, etc.)	<u>Plumbing Fixtures are not included in this phase</u>
2.	Please provide the details of Exterior Canopy Grills (68 sets as per the BOQ) Reference Item D / 4.0 in BOQ	<u>Please refer to Architectural drawing A29/31</u>
3.	Please provide the structural drawings for "Outside Development" Reference Item C / 1.0 to 7.0 in BOQ	<u>Structural details as follows:</u> <u>1.0 Driveway/ Drop-Off / Pathwalk - 150mm thk concrete with 10mm dia rebars @ 200mm O.C bothways</u> <u>2.0 Curb and Gutter - Standard Curb and Gutter 150mm thk concrete with 5-10mm dia longitudinal bars and 10 mm dia transverse bars @ 200mm O.C.</u> <u>3.0 Parking Area - 2 - 5M x 26.2M x 150mm thk concrete with 10mm dia rebars @ 200mm O.C bothways</u> <u>4.0 Curb Only - Standard Curb 150mm thk concrete with 3-10mm dia longitudinal bars and 10 mm dia transverse bars @ 200mm O.C.</u> <u>5.0 Sidewalk - 100mm thk concrete with 10mm dia rebars @ 200mm O.C bothways</u> <u>6.0 Ramps / Entry steps (including footings) - 100mm thk concrete with 10mm dia rebars @ 200mm O.C bothways</u> <u>7.0 Outside Walls footings - please see Structural</u>

		<u>drawing S-2/21 Wall Footing Details</u>
4.	<p>Please confirm if Fire Sprinkler, Aircon System, and Plumbing Works scope of work is only Roughing-ins</p> <p>Reference Items I & J in BOQ</p>	<p><u>Item A. GENERAL REQUIREMENTS - Design Consultancy (Electrical, ECE, Auxiliary, Fire Protection, Aircon System, Plumbing / Sanitary) is included in the Scope. As will be designed by the winning bidder's Professional Mechanical Engineer, Sanitary Engineer and PECE the following are included in the Scope of Work:</u></p> <p><u>Roughing-ins for Fire Sprinkler and Aircon system includes pipe sleeves in slabs;</u> <u>For Plumbing Works all embedded pipes for plumbing, sanitary, and storm drainage system at ground floor are included in this phase. Also the roughing-ins for all Plumbing/Sanitary/Storm Drainage fixtures are included in this Scope; and, So as with the Auxiliary system.</u></p>
5.	<p>We would like to clarify if Supply & Install of Electrical Panelboards, Distribution Panelboards & Devices (Auxilliary, Swicth, FDAS, CCTV) are not included to our scope?</p>	<p><u>These items are not included in this phase of the project</u></p>
6.	<p>We would like to clarify the limit of Electrical Scope of Work, if Service Entrance Pedestal is include to our scope?</p>	<p><u>All pipes with wires and items in H.3.00 Boxes embedded in slabs and CHB walls are included in the Scope.</u> <u>Service Entrance Pedestal structural component</u></p>

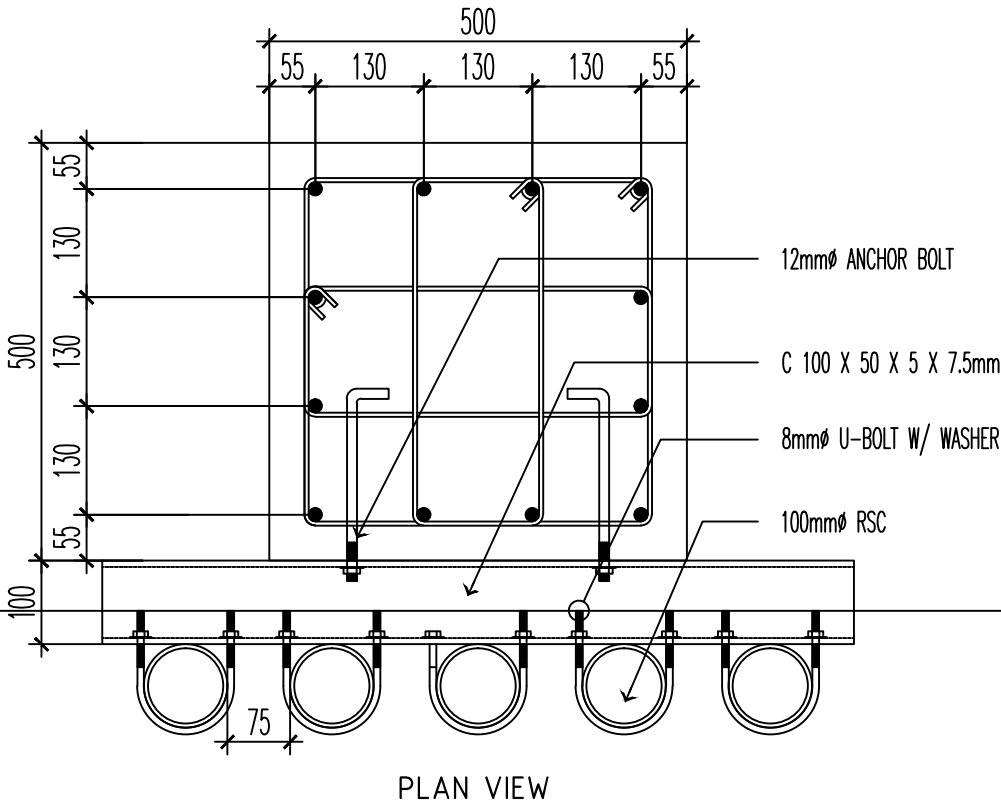
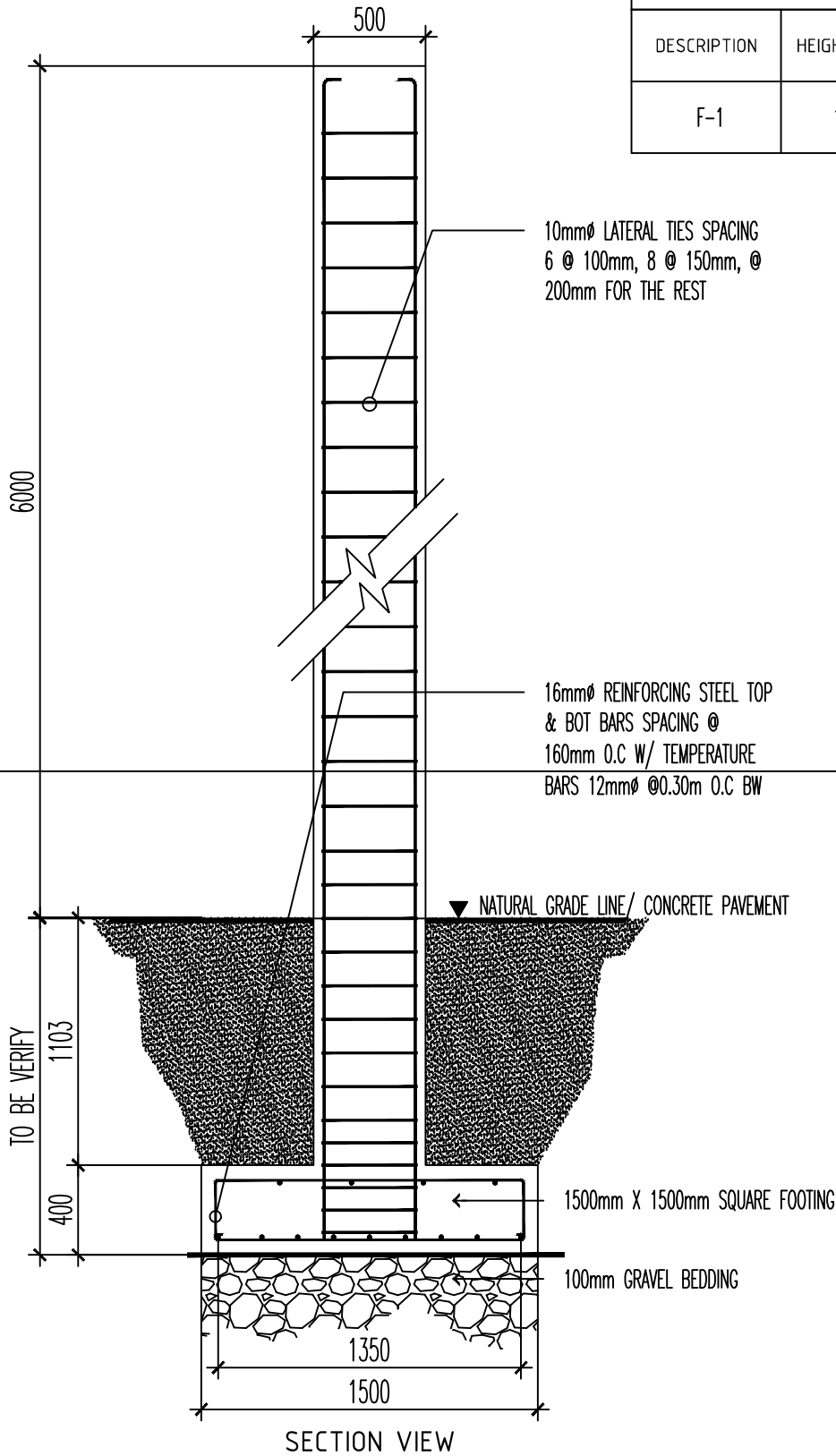
		<u>including all embedded bolts are included in Electrical scope. 100mm dia. RSC and steel channel are excluded.</u> <u>Please see attached Annex "A" Drawing</u>
7	Can you pls provide Electrical load schedule	<u>Item A. GENERAL REQUIREMENTS - Design Consultancy (Electrical, ECE, Auxiliary, Fire Protection, Aircon System, Plumbing / Sanitary) is included in the Scope. Design of building's Electrical system including Electrical Load Schedule shall be based on issued Electrical Bid Drawings and shall be finalized by the winning bidder's Professional Electrical Engineer.</u>

This Supplemental/Bid Bulletin no. 4 shall form part of the Bidding Documents. All terms, conditions, and instructions to bidders specified in the Bidding Documents inconsistent herewith are hereby superseded and modified accordingly.

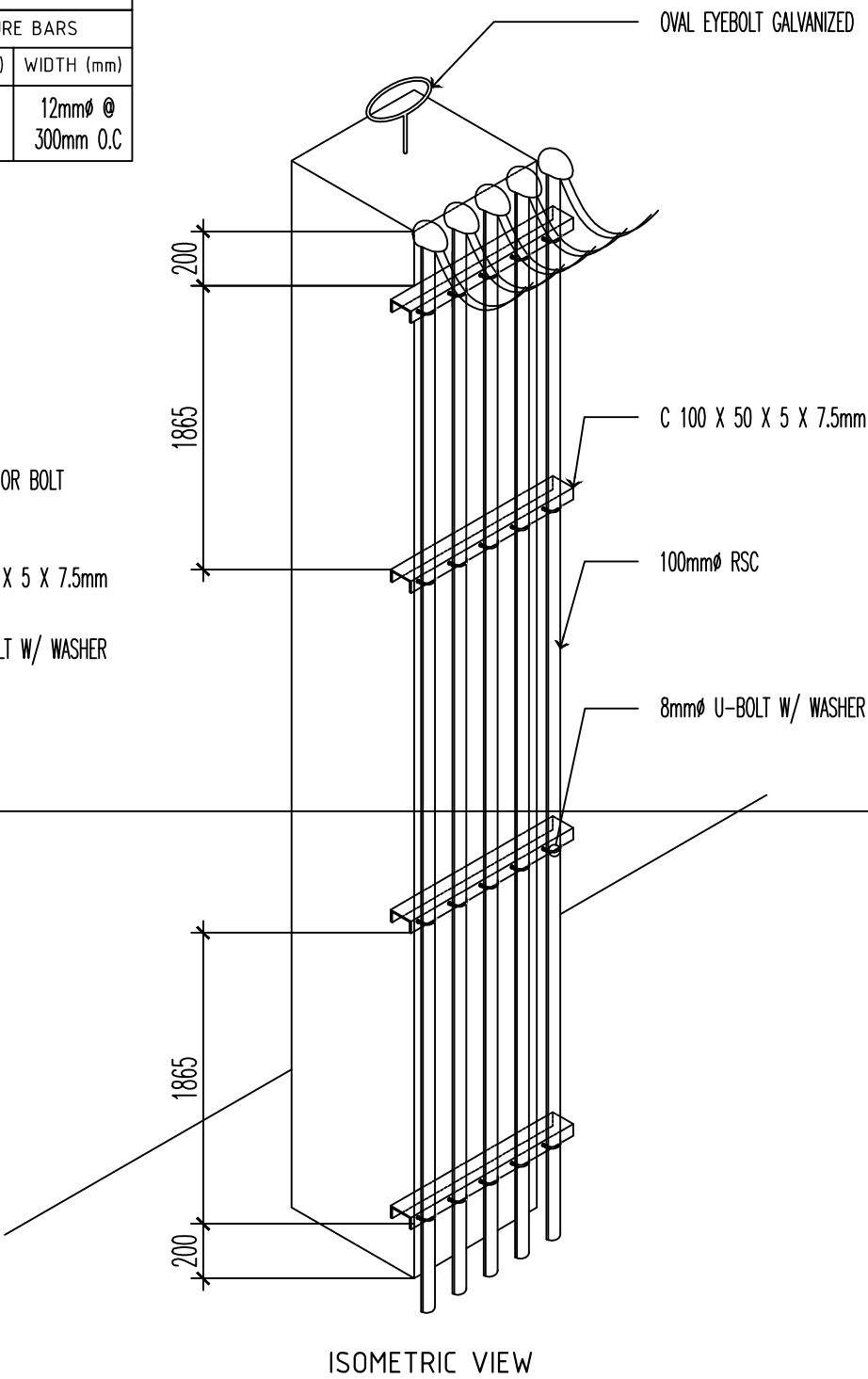
For guidance and information of all concerned.


ISABELITA C. BENEDICTOS
Chairperson, BAC Infrastructure and Repairs

SCHEDULE OF FOUNDATION								
DESCRIPTION	HEIGHT (mm)	DEPTH (mm)	DIMENSION		REINFORCING STEEL BARS		TEMPERATURE BARS	
			LENGTH (mm)	WIDTH (mm)	LENGTH (mm)	WIDTH (mm)	LENGTH (mm)	WIDTH (mm)
F-1	1500	400	1500	1500	16mmØ @ 160mm O.C	16mmØ @ 160mm O.C	12mmØ @ 300mm O.C	12mmØ @ 300mm O.C



500mm X 500mm W/ 12-16mmØ VERTICAL BARS W/ 3-10mmØ LATERAL TIES SPACING 6 @ 100mm, 8 @ 150mm, @200mm FOR THE REST.



BULACAN STATE UNIVERSITY
PROJECT MANAGEMENT OFFICE
BRGY. GUINHAWA, CITY OF MALOLOS, BULACAN
Tel. No.: (044) 919-7800
E-mail address: bulsu.pmo2013@gmail.com

PROJECT TITLE:	PREPARED BY:	SUBMITTED BY:	RECOMMENDING APPROVAL:	RECOMMENDING APPROVAL:	APPROVAL:	SHEET CONTENTS:	SHEET NO.
FIVE (5) STOREY RESOURCE MANAGEMENT BUILDING PHASE 2							
LOCATION:		CAD BY:	CHECK BY:				
		DATE:	DATE:				